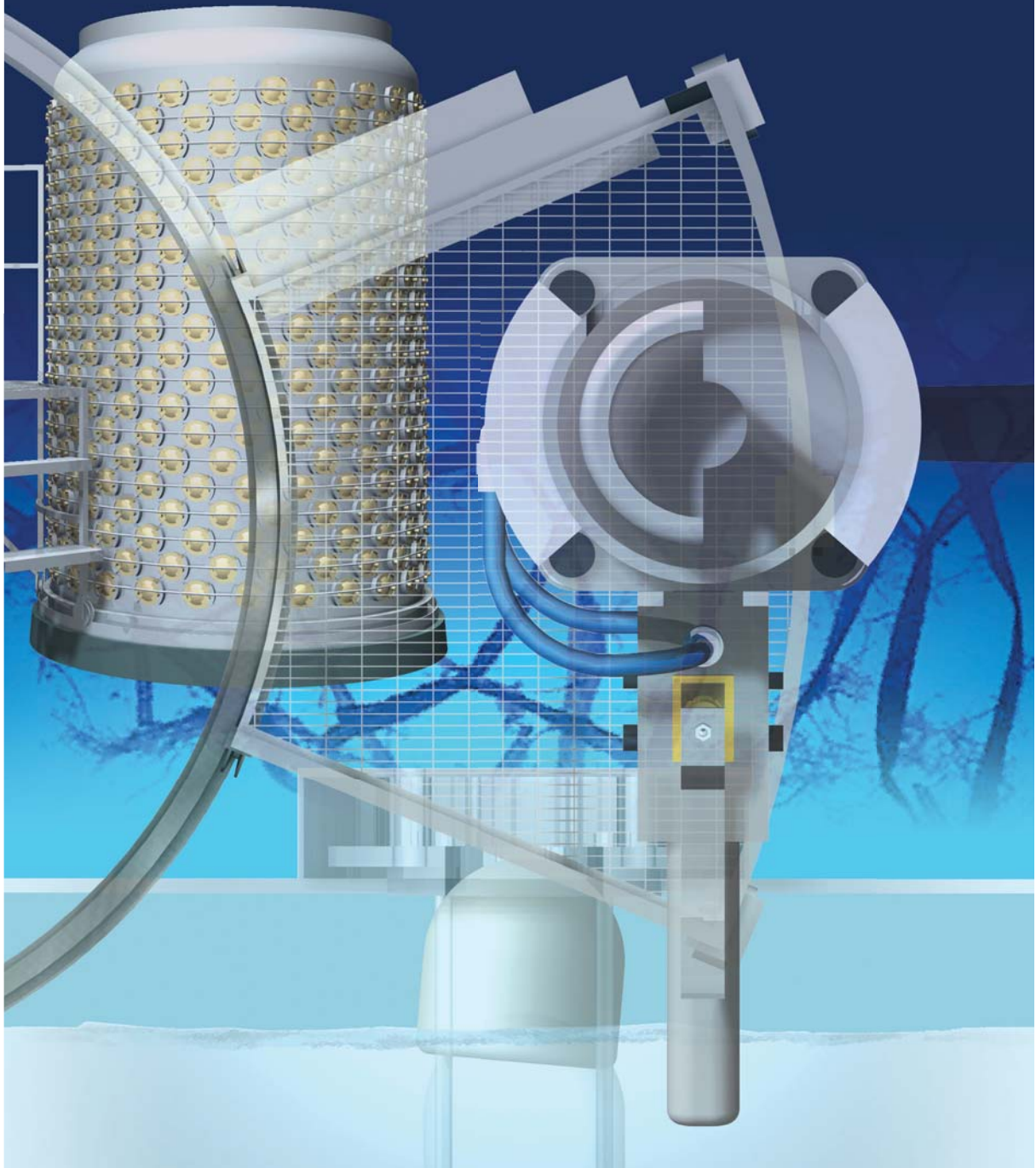


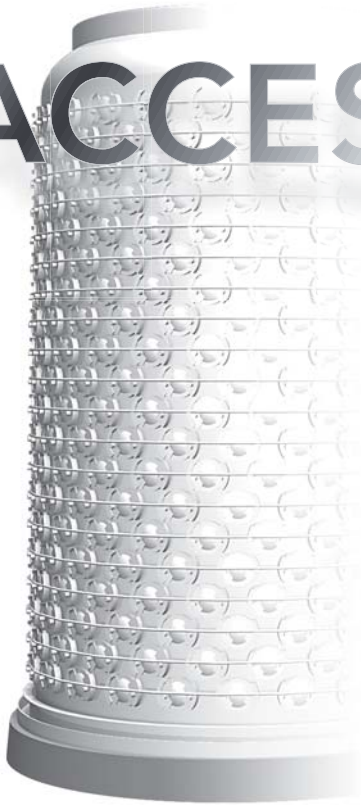
RADICLONE ACCESSORIES





RADICLONE

ACCESSORIES

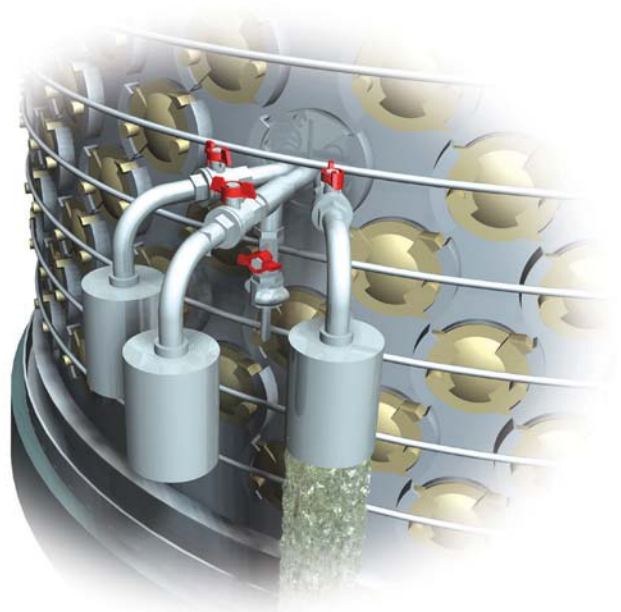


Noss offers various ergonomic accessories for efficient service and maintenance.

Manufacturing materials for all accessories are acid-proof stainless steel SS 14 23 43 (316 L), aluminium or highly durable plastic material resistant to chemicals and wear.

Consistency Sampler

The consistency sampler is used for collecting feed, accept and reject pulp samples directly from the RADICLONE unit. All three samples can be taken from one single point. It is easy to install in one of the openings normally used for a cyclone. It eliminates the need for costly service platforms (sometimes installed under the operating floor) and separate sampling valves on the feed, accept and reject pipes.



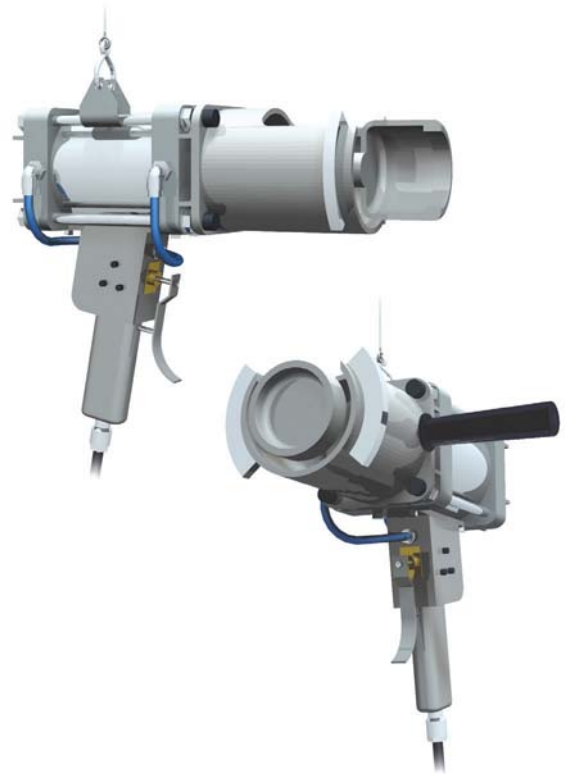
Pneumatic Inserter / Extractor

A pneumatically powered combined inserter/extractor can be used for larger systems to make the service more efficient.

Changing between installation and extraction of cyclones is easily done by shifting two different clamps.

This tool is manufactured primarily in aluminium to reduce the weight. Nuts and bolts are stainless steel, with other parts made of a synthetic material.

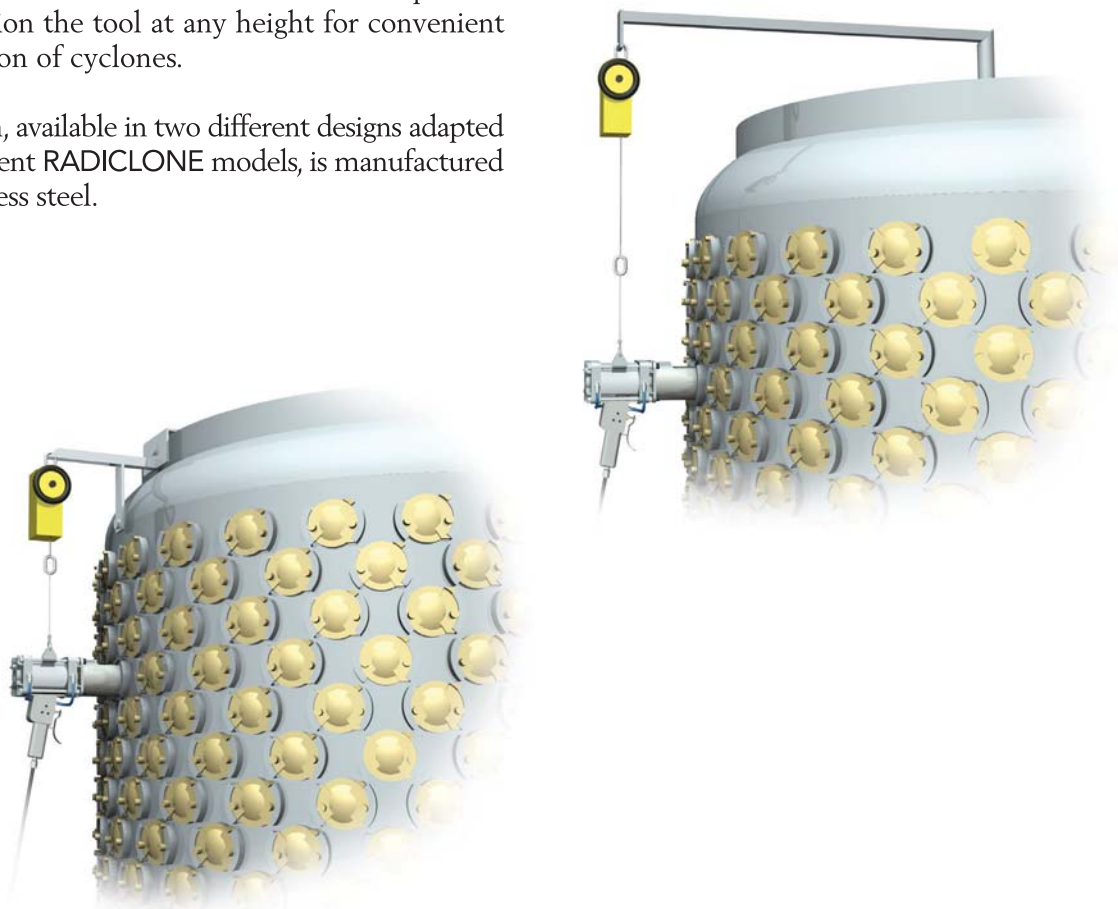
It is inserted in the RADICLONE unit in a manner similar to the manual tool, but the pulling and pushing is effected by simply pressing the trigger.



Balance Block / Extension Arm

For ease of handling Noss recommends using the balance block hanging from an extension or fixing arm. The balance block allows the operator to position the tool at any height for convenient extraction of cyclones.

The arm, available in two different designs adapted to different RADICLONE models, is manufactured in stainless steel.

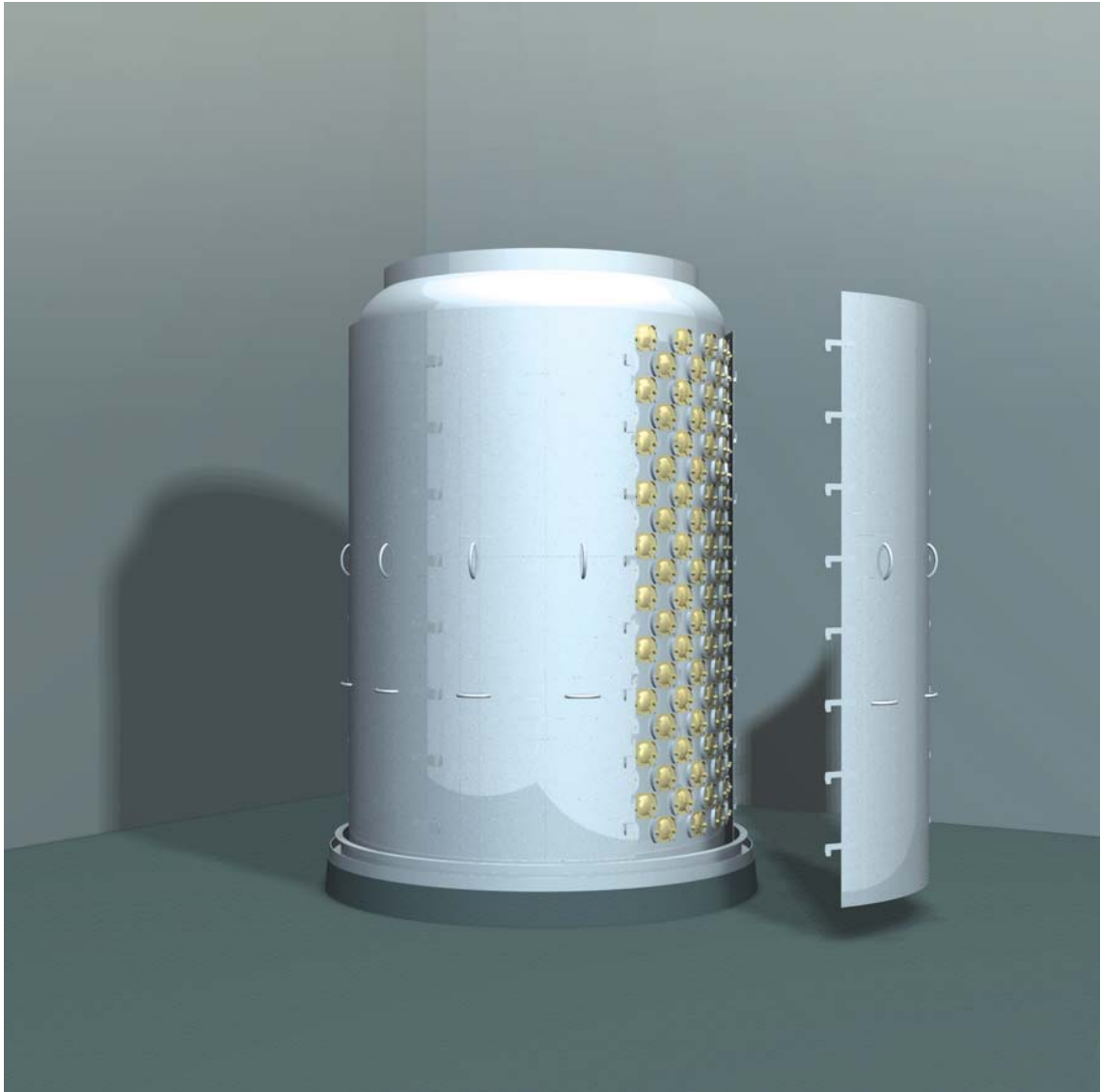




Service Platform

The service platform is recommended for larger units, RADICLONE AL80–400 (or AM125–208) and larger. It is a solid construction built in stainless steel. The maximum allowed load is 250 kg (550 lbs). The outer wheels, made of a durable synthetic material resistant to chemicals, are vertically adjustable to fit different RADICLONE foundation heights.

The platform is delivered with a rail to be welded to the foundation ring of the RADICLONE unit.



Protection Shields

As an alternative to safety hoops, Noss offers protection shields available for the vertical type of RADICLONE units. They are made in aluminium and are easily installed and lifted off by hand.

The main objective of the shields is to protect from personal injury. All cyclones are accessible once the shields are lifted off which takes only a few minutes.



Lid Turning Tool

Removing the lids is easily done with the turning tool. The lids are turned 90° and then removed by using the same tool.

The tool is manufactured of aluminum.



Cyclone Extractor

Extraction of cyclones is very easy when using this special tool. After removing the lid, the extractor clamp is applied to the cyclone head and the handles are pulled. The cyclone is then simply removed by hand and laid aside.

The extractor is made of stainless steel except for some minor parts.

Cyclone Inserter

The cyclone inserter should be used when installing the cyclones. It ensures that cyclones are mounted in the correct position in RADICLONE units.

The inserter also protects cyclone heads from being damaged when using a recommended rubber mallet.

The tool is manufactured in aluminum.

Vacuum Breaker / Air Bleed

A combined vacuum breaker and air bleed is mounted on top of RADICLONE units.

This device is primarily a vacuum breaker or safety valve that prevents RADICLONE units and piping from damage when the system is stopped. It also works in the reverse way and allows the air to be expelled on start-ups.

During normal operation the floating body is kept in the sealed position by the inner pressure of the RADICLONE.

This device eliminates the need for costly air bleed piping and valves.

It is normally delivered with new RADICLONES but it can also be installed on older units as a direct replacement for the original vacuum breaker.



On shut-downs (vacuum breaker)

As soon as the pressure in the RADICLONE becomes lower than the atmospheric pressure, the vacuum breaker automatically opens and the floating body falls down, thus allowing the outside air to enter the RADICLONE and piping system.

On start-ups (air bleed)

On start-ups, air in the piping system and RADICLONE units needs to be eliminated as soon as possible.

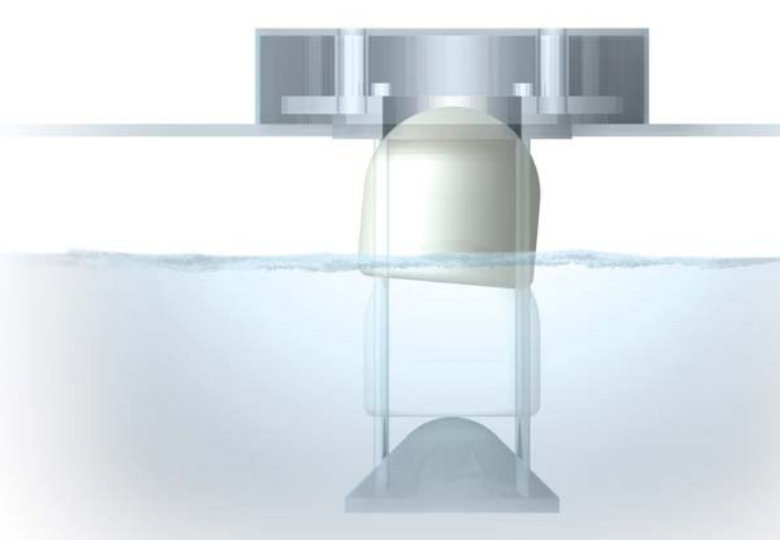
The floating body is kept in the lower position by its own weight as long as there is no liquid pushing the floating body upwards. This allows the air to pass freely through the opening. When the liquid level in the RADICLONE rises and hits the body from below, it will be lifted up and finally make a tight seal against the seat.

The vacuum breaker/air bleed fits on all RADICLONE units (AM80-50 or AM125-32 or larger), even on older models.

The device is manufactured in stainless steel except for the floating body which is made of a chemical resistant, hard-plastic material.

Advantages:

- Fast elimination of air on start-ups.
- Much lower installation costs due to the eliminated air bleed piping.





LOCAL SUPPORT – WORLDWIDE

The global Noss organization is adapted to the pulp and paper industry's regional requirements. Through our own offices around the world we provide our customers with service and support close to their operations. Our service engineers regularly service all Noss installations in order to secure optimal operating conditions.

Warehouses in Europe, Asia and North America ensure fast availability of spare parts.



Noss AB
P.O. Box 20
SE-601 02 Norrköping
SWEDEN
Telephone +46 11 23 15 00
Telefax +46 11 13 59 23
E-mail info@noss.se

Noss Company
1044 Culpepper Dr SW
Conyers, GA 30094
USA
Telephone +1 770 981 9550
Telefax +1 770 981 3572
E-mail info@noss.com

Noss Canada Inc.
227-G Brunswick Blvd., Pointe-Claire
Quebec, H9R 4X5
CANADA
Telephone +1 514 697 2029
Telefax +1 514 697 6068
E-mail info@noss.com

Noss KK
24-11, Kasuga 2-Chome
Bunkyo-ku, Tokyo 112-0003
JAPAN
Telephone +81 3 3811 8737
Telefax +81 3 3811 0807
E-mail nosskk@noss.com

www.noss.com